

Date : Jun.2,1999

Temperature increase of main components: 主要部品温度上昇

Model : VAF5

1. Conditions

- (1) Input : AC 85 ~ 264 [V]
- (2) Output : Rated output
- (3) Mounting method : Shown as Fig.1.1

2. Result

No.	Parts name	Symbol No.	Increase (ΔT)						Rated temp. [°C]	Reference
			[deg]							
			5V	12V						
1	Line filter	L11	19	20					120	
2	electrolytic capacitor	C12	17	19					105	
3	Input rectifier	SS11	16	17					150	Junction temp.
4	Power control IC	IC11	53	58					150	Junction temp.
5	electrolytic capacitor	C16	21	25					105	
6	Transformer	T11	36	35					120	
7	Rectified diode(Output)	D51	45	34					150	Junction temp.
8	electrolytic capacitor	C52	19	12					105	
9	electrolytic capacitor	C55	17	14					105	
10										
11										
12										
13										
14										
15										
16										
17										
18										
19										
20										

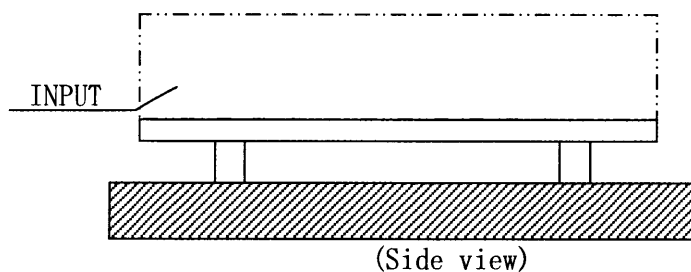


Fig.1.1 Mounting method
(Normal position)