

Date : Apr.9,2003

Temperature increase of main components: 主要部品温度上昇

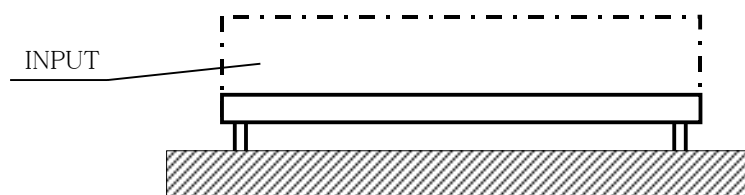
Model: VAF5

1. Conditions

- (1) Input : AC 85 ~ 264V
 (2) Output : Rated output
 (3) Mounting method : Shown as Fig.1.1

2. Result

No.	Parts name	Symbol No.	Increase (ΔT)						Rated temp. [°C]	Reference
			[deg]							
			3V	24V						
1	Rectifier(Input)	L11	13	27					120	
2	Input Capacitor	C12	20	23					105	
3	Rectifier(Input)	SS11	23	34					150	Junction Temp.
4	Power Control Ic	IC11	49	53					150	Junction Temp.
5	Capacitor(Control Circuit)	C16	22	23					105	
6	Transformer	T11	35	35					120	
7	Rectified Diode(Output)	D51	50	38					150	Junction Temp.
8	Output Capacitor	C52	24	11					105	
9	Output Capacitor	C55	25	14					105	
10										
11										
12										
13										
14										
15										
16										
17										
18										
19										
20										



(Side view)

Fig.1.1 Mounting method
(Normal position)