

Apr.13,2007

Temperature increase of main components: 主要部品温度上昇

Cosel.co.,ltd.

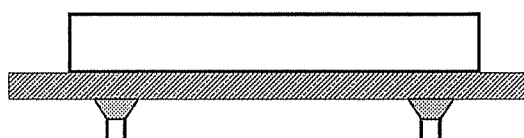
Model: ZUS1505/ZUW1505

## 1. Conditions

- (1) Input :DC 4.5 ~ 9 [V]  
 (2) Output :Rated output  
 (3) Mounting method :Shown as Fig.1.1

## 2. Result

No.	Parts name	Symbol No.	Increase ( $\Delta T$ )					Rated temp. [°C]	Reference
			[deg]						
			5V	12V	$\pm 12V$	$\pm 15V$			
1	Transformer	T12	37	47	47	47		120	
2	Switching Transistor	TR16	54	65	59	59		150	Junction Temp.
3	Rectified Diode(Output)	SS71	44	47	48	48		150	Junction Temp.
4	Power Control Ic	IC11	32	38	41	41		125	Junction Temp.
5	Photocoupler	PC11	36	30	40	40		125	Junction Temp.
6	Output Choke	L71	32	36	41	41		120	
7	Output Capacitor	C73	31	32	—	—		125	
8	Output Capacitor	C72,C78	—	—	36	36		125	
9									
10									
11									
12									
13									
14									
15									
16									
17									
18									
19									
20									



(Side view)

Fig.1.1 Mounting method  
(Normal position)