

Apr.13,2007

Temperature increase of main components: 主要部品温度上昇

Cosel.co.,ltd.

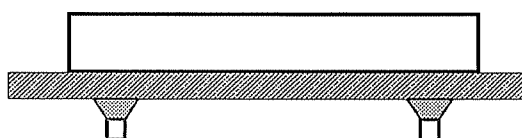
Model: ZUS605/ZUW605

## 1. Conditions

- (1) Input :DC 4.5 ~ 9 [V]  
 (2) Output :Rated output  
 (3) Mounting method :Shown as Fig.1.1

## 2. Result

No.	Parts name	Symbol No.	Increase ( $\Delta T$ )					Rated temp. [°C]	Reference
			[deg]						
			5V	12V	15V	$\pm 12V$	$\pm 15V$		
1	Transformer	T11	52	50	49	50	48	130	
2	Transistor	TR31	58	54	49	52	50	150	Junction Temp.
3	Switching Transistor	TR41	48	50	49	49	48	150	Junction Temp.
4	Photocoupler	PC11	41	41	34	34	38	125	Junction Temp.
5	Rectified Diode(Output)	D51	49	47	41	43	42	150	Junction Temp.
6	Output Choke	L51	42	41	36	38	37	120	
7	Output Capacitor	C55	36	40	32	—	—	125	
8	Output Capacitor	C55,C57	—	—	—	34	29	125	
9									
10									
11									
12									
13									
14									
15									
16									
17									
18									
19									
20									



(Side view)

Fig.1.1 Mounting method  
(Normal position)