

Apr.13,2007

Temperature increase of main components: 主要部品温度上昇

Cosel.co.,ltd.

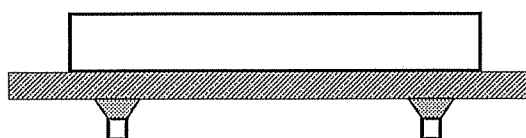
Model: ZUS1548/ZUW1548

## 1. Conditions

- (1) Input :DC 36 ~ 75 [V]  
 (2) Output :Rated output  
 (3) Mounting method :Shown as Fig.1.1

## 2. Result

No.	Parts name	Symbol No.	Increase ( $\Delta T$ )					Rated temp. [°C]	Reference
			[deg]						
			5V	12V	$\pm 12V$	$\pm 15V$			
1	Transformer	T12	35	33	30	37		120	
2	Switching Transistor	TR16	44	35	38	43		150	Junction Temp.
3	Rectified Diode(Output)	SS71	45	40	37	43		150	Junction Temp.
4	Power Control Ic	IC11	32	36	32	37		125	Junction Temp.
5	Photocoupler	PC11	29	28	28	33		125	Junction Temp.
6	Output Choke	L71	30	29	31	33		120	
7	Output Capacitor	C73	29	28	—	—		125	
8	Output Capacitor	C72,C78	—	—	28	33		125	
9									
10									
11									
12									
13									
14									
15									
16									
17									
18									
19									
20									



(Side view)

Fig.1.1 Mounting method  
(Normal position)