

Apr.13,2007

Temperature increase of main components: 主要部品温度上昇

Cosel.co.,ltd.

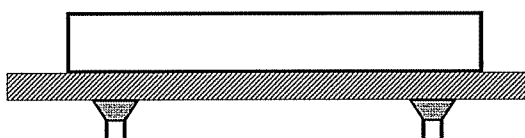
Model: ZUS2524/ZUW2524

1. Conditions

- (1) Input :DC 18 ~ 36 [V]
 (2) Output :Rated output
 (3) Mounting method :Shown as Fig.1.1

2. Result

No.	Parts name	Symbol No.	Increase (ΔT)					Rated temp. [°C]	Reference
			[deg]						
			5V	12V	$\pm 12V$	$\pm 15V$			
1	Transformer	T12	40	48	48	53		120	
2	Switching Transistor	TR16	41	55	56	63		150	Junction Temp.
3	Rectified Diode(Output)	SS71	41	43	48	54		150	Junction Temp.
4	Power Control Ic	IC11	33	37	41	45		125	Junction Temp.
5	Photocoupler	PC11	32	35	40	43		125	Junction Temp.
6	Output Choke	L71	35	35	49	47		120	
7	Output Capacitor	C74	32	35	–	–		125	
8	Output Capacitor	C74,C80	–	–	39	43		125	
9									
10									
11									
12									
13									
14									
15									
16									
17									
18									
19									
20									



(Side view)

Fig.1.1 Mounting method
(Normal position)